



# Newsletter 9-75

## ADAPTERS, EYEPIECE, POPULAR

Black anodized aluminum with eyepiece locking screw, not threaded for filters.

### 2" To 1 1/4"

Permits use of 1 1/4" (31.7mm) eyepieces in focusers designed to accept 2" (50.8mm) eyepieces. . . . .

Stock No. AEP2-1  
\$7.50



### 1 1/4" To 24.5mm

Permits use of 24.5mm (0.965") eyepieces in focusers designed to accept 1 1/4" (31.7mm) eyepieces . . . . .

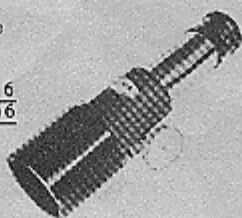
Stock No. AEP-01  
\$4.75



## ADAPTER, CELESTRON<sup>R</sup> EYEPIECE 2" (50.8MM)

Now you can utilize 2" eyepieces and accessories on Celestron<sup>R</sup> 5" or 8" telescopes. Screws on, black anodized aluminum with eyepiece locking screw . . . . .

Stock No. AE-02C  
\$16.00



## FOCUSER, RACK & PINION FOR CELESTRON<sup>R</sup>

For 1 1/4" (31.7mm) eyepieces; eliminates any image shift when focusing. Same deluxe features as on the OPTICA b/c Professional Focuser Model FPRP-6. Screws onto Celestron<sup>R</sup> 5" or 8" . . . . .

Stock No. FGRP-6  
\$52.66

## LATITUDE ADJUSTER FOR CELESTRON<sup>R</sup>

Greatly simplifies polar alignment. Critically adjusts telescope to exact latitude setting in seconds with a smooth screw adjustment. Installs immediately without tools. Fits both 5" and 8" wedges. . . . .

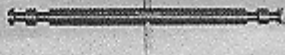
Stock No. LAC-01  
\$29.95



## SCREW

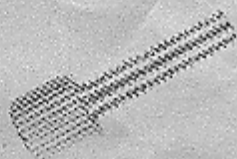
No. 8-32 standard machine setscrew. 5/8" shank length. Ribbed head, chrome-plated brass . . . . .

Stock No. S8-32  
50¢



## VIDEO CAMERA COUPLERS

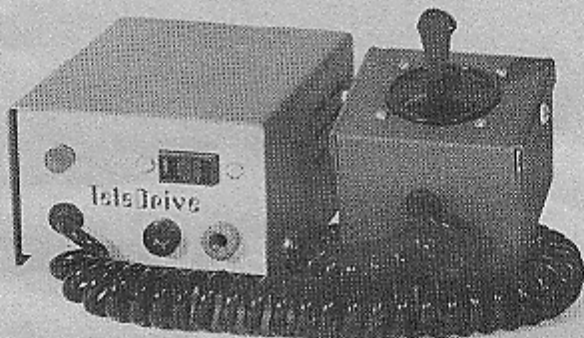
Interested in trying video camera techniques through your telescope? OPTICA b/c has a complete selection of couplers to hook up "C" Mount video camera equipment to telescopes, microscopes and spectrosopes. Send your specifications for a quote.



.....INTRODUCING SOMETHING REALLY NEW IN

## DRIVE CORRECTOR SYSTEMS

AFTER FIVE YEARS OF FIELD TESTING OPTICA b/c OFFERS MORE UTILITY, ECONOMY AND DEPENDABILITY. WE INVITE YOU TO COMPARE THE ADVANCED FEATURES OF THESE BUDGET PRICED, COMPACT DRIVE CORRECTORS AND POWER CONVERTER. ALL COMPONENTS ARE 100% SOLID STATE, DOUBLE INSULATED TO ELIMINATE ELECTRICAL SHOCK, AND UNITS CANNOT BE DAMAGED BY CONNECTING CORDS INCORRECTLY. ALL REQUIRED CORDS ARE SUPPLIED. EACH UNIT IS OF SUCH HIGH QUALITY THAT IT CARRIES AN UNCONDITIONAL FIVE YEAR GUARANTEE AGAINST FAULTY WORKMANSHIP OR PARTS.



### DRIVE CORRECTOR SYSTEM FOR RIGHT ASCENSION - MODEL DCE-01

1. Compact and lightweight

Component Box: 2" x 3" x 4". Weight: 18 oz.

Hand Control Box: 2 1/8" x 2 3/8" x 1 1/4". Weight: 4 oz.

2. Wider range, 30-90 hz. The control box incorporates a single direction moveable stick for continuously variable speed correction in R.A. The further the stick is moved the faster or slower the rate, an up-to-date improvement over push button products. Up to 300% more range than many other brands. Coillcord extends 10 feet, retracts to 1 1/2 feet.
3. The independent "fine tune" Trim Control allows R.A. drive to be set for solar, lunar, planetary and stellar rates. Large 13.3% trim range.
4. Red output voltage monitor light.
5. Ready for use with 12 volt car battery. Cord with alligator clamps included. A separate converter may be purchased for operation with 110VAC household current. (See Converter 110VAC to 12VDC.)

Drive Corrector System, Model DCE-01 . . . . . Stock No. DCE-01  
\$49.95



DRIVE CORRECTOR SYSTEM FOR RIGHT ASCENSION AND DECLINATION - MODEL DCP-01

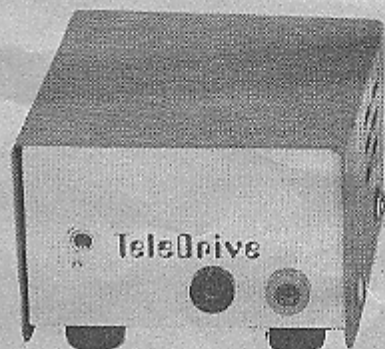
One of the world's most versatile and modestly priced, full photo capability systems. Offers all the outstanding features of the DCE-01 model plus the following:

1. Control box has a unique, omni-directional stick control that operates like an aircraft stick. Just move the stick in any direction you wish the scope to move and it will correct in declination, right ascension or both at the same time. Continuously adjustable in all directions.
2. High torque, high efficiency, variable speed, reversible motor for declination. Motor reacts immediately to control stick. No starting lag, annoying overrun or slow down; reverses instantly! Due to the wide variety of mounts and gears available, customers will have to fabricate their own hook-up, with the exception of the Celestron 5" and 8". See Celestron 5-8 Adapter Kit. Motor shaft size is 1/4". Other sizes available, quotation on request.
3. Operates on 12VDC current. For use with 110 v household current, see Converter 110VAC to 12VDC.

Drive Corrector System, Model DCP-01 . . . . . Stock No. DCP-01  
\$89.95

CONVERTER - 110VAC To 12VDC

For using Models DCE-01 or DCP-01 on regular 110 volt household current. Converts 110VAC to 12VDC. Converters are available for other voltage requirements; quotation on request. . . . . Stock No. CAC-12  
\$19.95





ATTENTION CELESTRON OWNERS! NOW! DECLINATION AND RIGHT ASCENSION  
CAPABILITY IN ONE UNIT!

CELESTRON 5-8 ADAPTER KIT

Mechanical mount for using the model DCE-01 drive corrector on a Celestron. No machining or drilling required. Drive motor and components can be installed in less than 5 minutes. Adapter Kit fits both Celestron 5" and 8" models. . . . . Stock No. CAK-01  
\$14.95

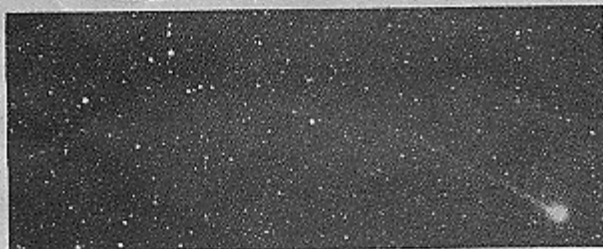
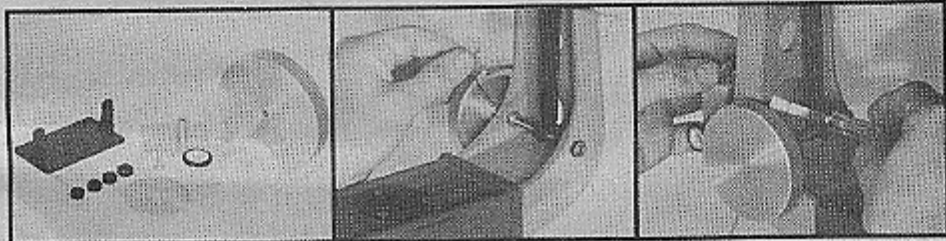


Photo of Comet Kobayashi-Berger-Milon (1975h) guided with the Model DCP-01 Drive Corrector System. Notice the pinpoint sharp images free of both Dec. and R.A. guiding errors.

Photo by D. S. McGlaufflin